



Georgia-Pacific
Building Products

STRENGTH INSIDE AND OUT

GYPHUM FOR INTERIOR AND EXTERIOR CONSTRUCTION



GYPHUM PRODUCTS BROCHURE

IN-FIELD TECHNICAL SUPPORT

Whether it's your first job or your fifteenth, the personal attention you get from Georgia-Pacific will never change. From conception to completion, you'll always get the expert support and resources you need.

IN-FIELD TECHNICAL SUPPORT:

- Building Envelope Manager (BEM)
- Field Sales Manager (FSM)
- Inside Sales Manager
- Technical Services Team



DENSGLOSS® GYPSUM PANELS



DensGlass®

DENSGLOSS® SHEATHING

For over 30 years, DensGlass Sheathing has been adding high performance and durability to a wide range of building assemblies. Its fiberglass mat-faced gypsum material helps keep mold and moisture out of your structures. All DensGlass Gypsum Panels have a 12-month limited warranty for exposure to normal weather conditions.

- Greater moisture resistance than paper-faced panels
- Noncombustible with a fiberglass reinforced core
- Easy to install and can be cut with standard drywall tools
- A versatile substrate for applying a variety of WRB/ABs



DENSGLOSS® SHAFTLINER

These fiberglass mat gypsum liner panels are great for vertical and horizontal shaftwall assemblies, stairwell applications and area separation walls in commercial and multifamily structures.

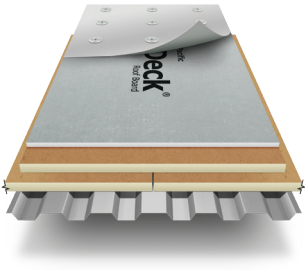
- Classified as noncombustible
- Dimensionally stable and moisture resistant
- Quick and simple installation





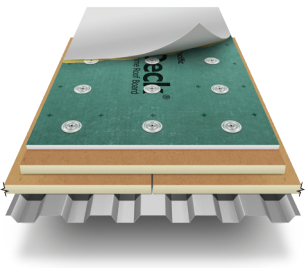
DENSDECK® ROOF BOARDS

DensDeck Roof Boards provide four dimensions of protection against fire, wind, puncture and hail. With three solutions to choose from, you can give your commercial low-slope roof a strong shield for the most common and costly forms of damage and wear.



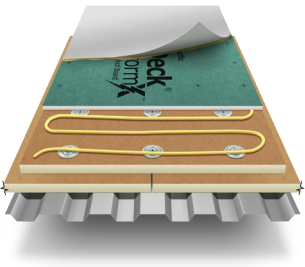
DensDeck® Roof Board

- For mechanically fastened assemblies
- Resists fire, wind, puncture and hail



DensDeck® Prime Roof Board

- For fully adhered, partially adhered and mechanically fastened assemblies
- Enhanced moisture resistance¹



DensDeck® StormX™ Prime Roof Board

- For partially and fully adhered assemblies
- FM classified for Very Severe Hail (VSH) in select single-ply membrane assemblies²

¹ Although DensDeck® Roof Boards / DensDeck® Prime Roof Boards are engineered with fiberglass facings and high-density gypsum cores, the presence of moisture can have a detrimental effect on the performance of the product and the installation of roofing membranes. Damage or reduction in performance resulting from exposure to more than an incidental amount of moisture is NOT covered by the limited warranty for DensDeck® Roof Boards.

² Consult RoofNav for approved VSH assemblies with DensDeck StormX Prime Roof Board.



INNOVATING GYPSUM BOARD DESIGN

Georgia-Pacific pioneered innovative fiberglass mat gypsum technology and has been evolving the products for more than three decades. These constant innovations have even inspired changes in specifications for walls and roofing in building assemblies.



DENSSHIELD® TILE BACKER

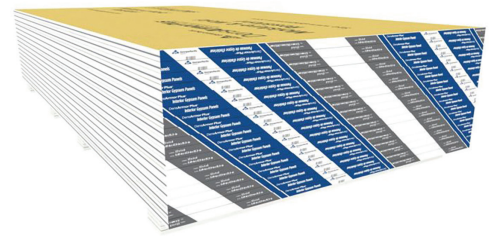
DensShield Tile Backer helps protect your walls and subfloor from moisture intrusion in any area where humidity is present. Its specialized acrylic coating provides a built-in water barrier that stops moisture at the surface.

- Does not require purchase of a separate moisture barrier
- Lightweight, easy-to-handle material
- Ideal for use behind tile
- Simply requires rust-resistant drywall screws
- Easily cuts, like drywall, with a utility knife



DENSARMOR PLUS® INTERIOR PANELS

DensArmor Plus Interior Panels are ideal for specialty commercial pre-rock installations and designed with fiberglass mat instead of paper facings to give the interior of your structure optimal protection against impact, abuse, moisture and fire. All DensArmor Plus Interior Panels have a 12-month limited warranty for exposure to normal weather conditions.



DensArmor Plus® Interior Panel

- Best for areas with high humidity
- Enhanced moisture protection to resist mold growth
- Fire resistant and noncombustible as described and tested in accordance with BS EN 13501-1, ASTM E136 or CAN/ULC S114

DensArmor Plus® Abuse-Resistant Interior Panel

- Formulated for high-traffic areas where there is potential incidental contact with walls (e.g., schools, hospitals, public buildings)

DensArmor Plus® Impact-Resistant Interior Panel

- Toughest version of DensArmor Plus, formulated for ultra-high-traffic areas where abuse may be intentional rather than accidental (e.g., healthcare facilities, gyms, prisons)

DENSELEMENT® BARRIER SYSTEM

This innovative, high-performance WRB/AB system helps protect your building envelope design while achieving faster dry-in because it can be installed in most weather conditions. The DensElement Barrier System has a 12-month limited warranty for exposure to normal weather conditions.

- Eliminates the need for a separate WRB/AB when properly sealed with DensDefy® Liquid Flashing
- Works across multiple substrates when DensDefy™ Liquid Barrier is used
- Weather flexibility allows for faster dry-in to accelerate schedules



DENSDEFY™ PRODUCTS

DensDefy Products work together to create a strong water-resistive barrier and air barrier (WRB/AB) to help protect against water intrusion and unwanted air movement. Plus, the latest product, DensDefy™ Liquid Barrier, can work across multiple substrates.



DensDefy® Liquid Flashing

- Seals and protects wall rough openings, penetrations, sheathing fasteners and seams
- Eliminates the need for joint reinforcing tape, reducing installation time
- Bonds and cures in adverse weather conditions
- May be applied to damp surfaces
- Can be fully exposed to UV and normal weather conditions for up to 12 months



DensDefy® Transition Membrane

- Impermeable, self-adhered sheet for connecting dissimilar materials
- Helps maintain air and moisture barrier continuity
- Bonds to most surfaces, such as glass mat gypsum sheathing, poured concrete, masonry, steel and wood-based substrates
- Ideal for drift or control joints, vertical expansion joints, gaps up to 1" and transitions between dissimilar materials
- Primerless application allows for faster installation time
- May be exposed to normal weather conditions for up to 12 months



DensDefy™ Liquid Barrier

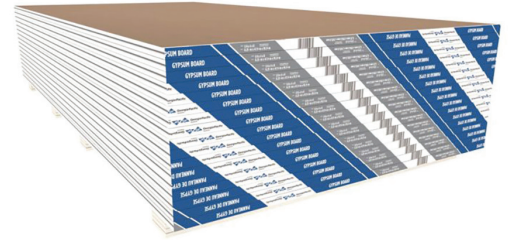
- DensDefy Liquid Barrier is a WRB/AB that can be used alongside DensElement® Barrier System and is easily applied to adjacent substrates such as concrete, wood panels, OSB panels, etc.
- Entire envelope will carry a single-source limited warranty backed by Georgia-Pacific Gypsum when used on adjacent dissimilar materials to DensElement Barrier System
- DensDefy Liquid Barrier cannot be used as a substitution for DensDefy Liquid Flashing



TOUGHROCK® GYPSUM BOARDS

This extremely versatile drywall can be used for new building construction or renovations as a wall or ceiling covering material. It's designed for direct attachment to wood and metal and can be used on both flat and curved structures.

ToughRock® Gypsum Boards offer a wide range of options that can fit your project need. They are noncombustible per ASTM E136 and GreenGuard Gold Certified by UL Environmental.¹



INCREASED FIRE RESISTANCE

ToughRock® Fireguard C® Gypsum Board

- Available thickness: 5/8"
- Designed for a variety of UL assemblies with a designated fire-resistant rating²

ToughRock® Fireguard C® Soffit Board³

- Available thickness: 5/8"
- Designed for a variety of fire-rated wood and steel-framed assemblies²

INCREASED MOISTURE RESISTANCE

ToughRock® Mold-Guard™ Gypsum Board

- Available thickness: 1/2"
- Ideal for high-humidity interior areas such as kitchens, bathrooms, basements and laundry room

ToughRock® Fireguard X® Mold-Guard™ Gypsum Board³

- Available thickness: 5/8"
- Designed for use in a variety of fire-rated wood and steel-framed assemblies²

¹Veneer Plaster Base is not GreenGuard Gold Certified.

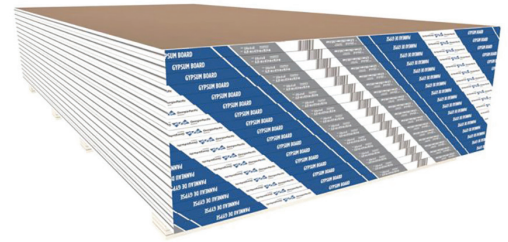
²Consult UL Fire Resistance Directory for assembly information.

³Product not available in all locations.



Expanded Options

ToughRock® Gypsum Boards offer a wide range of options that can fit your project need. They are noncombustible per ASTM E136 and GreenGuard Gold Certified by UL Environmental.1



ToughRock® Lite-Weight Fire-Rated Gypsum Board³

- Available thickness: 5/8"
- Designed for a variety of fire-rated walls and ceilings²

ToughRock® Lite-Weight Veneer Plaster Base³

- Available thickness: 1/2"
- Designed for the application of gypsum veneer plaster meeting ASTM C587

ToughRock® Lite-Weight Gypsum Board

- Available thickness: 1/2"
- Designed for improved sag resistance

ToughRock® Span 24® Lite-Weight Ceiling Board³

- Available thickness: 1/2"
- Designed for attachment to ceiling joists or trusses spaced 24" (610 mm) o.c.

ToughRock Fireguard X® Stretch 54® Gypsum Board³

- Available thickness: 5/8"
- Ideal for 9' ceilings

ToughRock® Fireguard X® Gypsum Board

- Available thickness: 5/8"
- Designed for a variety of fire-rated wood and steel-framed assemblies²

ToughRock® Fireguard X® Veneer Plaster Base³

- Available thickness: 5/8"
- UL certified and ULC listed Type X for use in a variety of fire-rated wood and steel-framed assemblies²

ToughRock® Gypsum Board

- Available thickness: 1/4", 3/8"
- Designed for direct attachment (screws, nails or adhesive) to wood and metal framing or other suitable surfaces

ToughRock® Gypsum Sheathing³

- Available thickness: 1/2", 5/8"
- Designed for direct mechanical attachment with screws, nails or staples to wood and metal framing

ToughRock® Shaftliner³

- Available thickness: 1"
- Use as a component in select fire-rated construction assemblies for area separation walls, stairwells, elevator shafts and other interior mechanical systems or duct enclosures²

¹Veneer Plaster Base is not GreenGuard Gold Certified.

²Consult UL Fire Resistance Directory for assembly information.

³Product not available in all locations.



● GYPSUM RELOAD FACILITIES

● GYPSUM PRODUCTION FACILITIES



Explore all of the options to fit your
unique building needs at:

BUILDGP.COM

**Technical hotline:
1-800-225-6119**

**Or, email us:
bpsales@gapac.com**